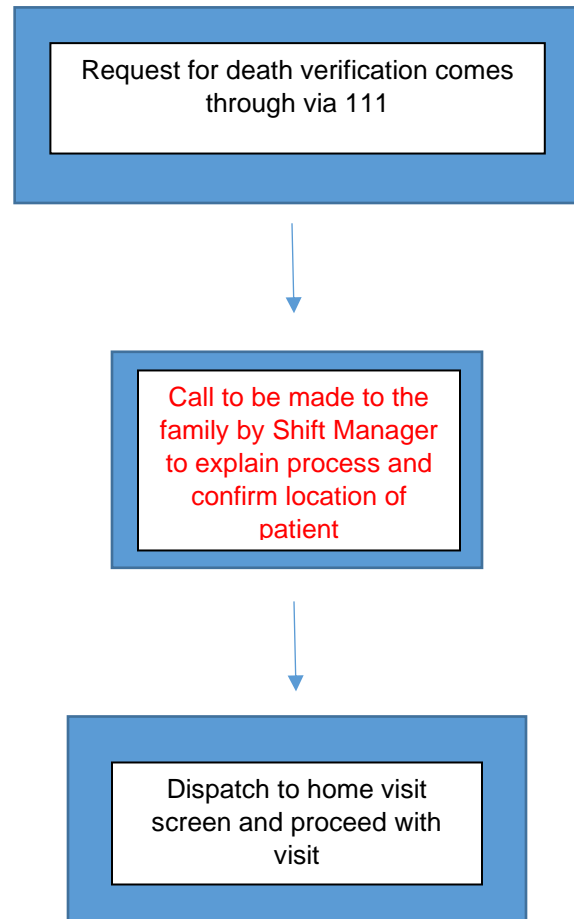


**Pathway for the verification of ALL deaths – NHS 111**

This entire process should be completed within 6 hours of the initial call from NHS 111

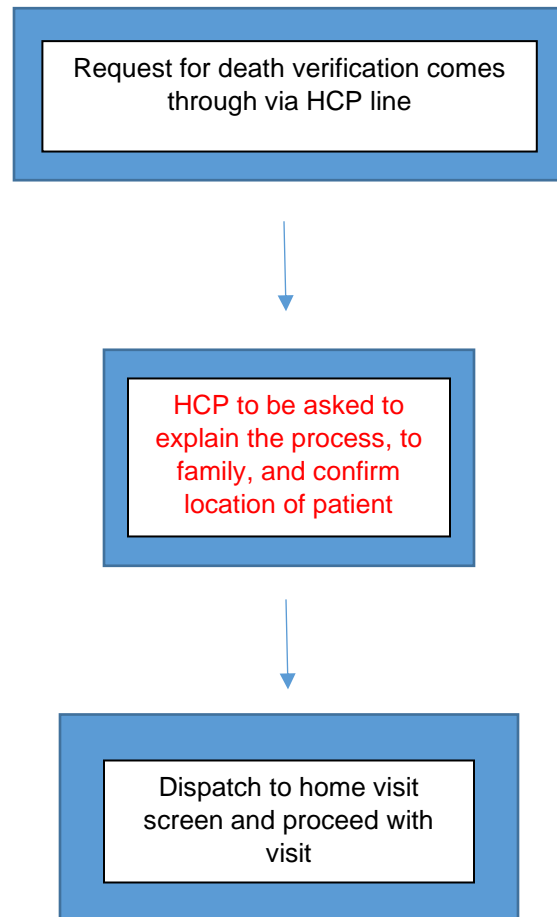


PPE FOR VERIFICATION
<ul style="list-style-type: none"><li>• Disposable apron</li><li>• Disposable gloves</li><li>• Fluid resistant surgical mask</li><li>• Bare below the elbows</li><li>• Gown and FFP3 are NOT recommended</li></ul>
OTHER ITEMS
<ul style="list-style-type: none"><li>• Stethoscope</li><li>• Pen torch</li><li>• Alcohol wipes</li></ul>

WHEN ATTENDING
<ul style="list-style-type: none"><li>• Limit time with patient</li><li>• Do not move patient</li><li>• Do not place items on surfaces</li><li>• No need to move/remove clothing</li><li>• Verify as per the following order<ul style="list-style-type: none"><li>○ Heart-auscultation</li><li>○ Pupil response to light</li><li>○ Respiratory effort-observation of chest</li><li>○ Palpation of central pulse</li><li>○ Motor response-trapezius squeeze</li></ul></li><li>• Clean stethoscope/torch with alcohol wipe</li></ul>

**Pathway for the verification of ALL deaths – Health Care Professional Line**

This entire process should be completed within 6 hours of the initial call from HCP



PPE FOR VERIFICATION
<ul style="list-style-type: none"><li>• Disposable apron</li><li>• Disposable gloves</li><li>• Fluid resistant surgical mask</li><li>• Eye protection</li><li>• Bare below the elbows</li><li>• Gown and FFP3 are NOT recommended</li></ul>
OTHER ITEMS
<ul style="list-style-type: none"><li>• Stethoscope</li><li>• Pen torch</li><li>• Alcohol wipes</li></ul>

WHEN ATTENDING
<ul style="list-style-type: none"><li>• Limit time with patient</li><li>• Do not move patient</li><li>• Do not place items on surfaces</li><li>• No need to move/remove clothing</li><li>• Verify as per the following order<ul style="list-style-type: none"><li>○ Heart-auscultation</li><li>○ Pupil response to light</li><li>○ Respiratory effort-observation of chest</li><li>○ Palpation of central pulse</li><li>○ Motor response-trapezius squeeze</li></ul></li><li>• Clean stethoscope/torch with alcohol wipe</li></ul>